



27 Throsby Close Barden Ridge NSW

4 🚗 3 🚗 4 🚗

Currently leased for \$1500 per week

Discover your dream family oasis in a tranquil cul-de-sac, with this as-new, grand 4-bedroom, double-storey residence.

Perfect for the discerning family, it features a formal entry, north-facing living spaces, and a state-of-the-art kitchen with stainless steel appliances and a granite island.

Enjoy expansive indoor-outdoor living with a family room, al fresco BBQ area, and a landscaped backyard with a spa.

The master suite boasts a WIR and ensuite, plus three more bedrooms with BIRs.

Type : House
Price : \$1,900,000 - \$2,050,000
Land Size : 720 sqm
View : <https://www.singerresidential.com.au/8014300>



Joshua Singer
02 9528 8738

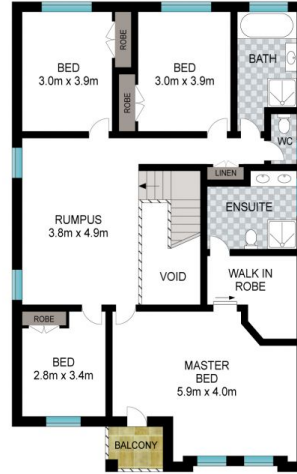


Joel Bethell
02 9528 8738

[For full version visit the website](https://www.singerresidential.com.au)



GROUND FLOOR



FIRST FLOOR



Scale in metres. Indicative only. Dimensions are approximate. All information contained herein is gathered from sources we believe to be reliable. However, we cannot guarantee its accuracy and interested persons should rely on their own enquiries.

INT: 300 m²
EXT: 48 m²



27 Throsby Close, Barden Ridge