



60 Woronora Crescent Como NSW

4 🏠 3 🚗 3 🚗

ENTRY VIA KEELE STREET COMO

Located in the prestigious and highly sought-after pocket of Como West, you'll enjoy a peaceful retreat while being just moments away from schools, parks, shops, and public transport. Convenience and serenity come together seamlessly in this coveted location.

A meticulously maintained family home filled with natural light and a warm ambiance. The spacious layout provides ample room for relaxation and entertainment.

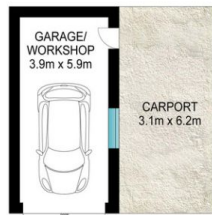
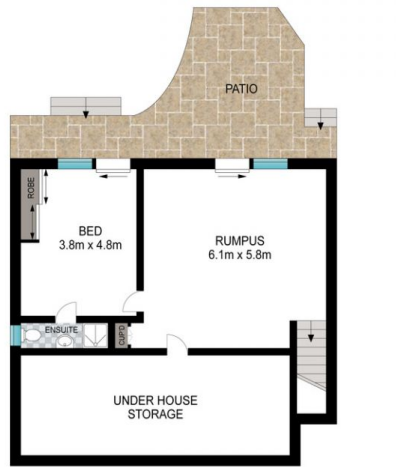
Outside, a private outdoor entertaining area awaits, perfect for hosting unforgettable gatherings or enjoying quiet

[For full version visit the website](https://www.singerresidential.com.au/7728859)

Type : House
Building Size : 285 sqm
Land Size : 594.4 sqm
View : <https://www.singerresidential.com.au/7728859>



Trisha Singer
0405143152



Scale in metres. Indicative only. Dimensions are approximate. All information contained herein is gathered from sources we believe to be reliable. However, we cannot guarantee its accuracy and interested persons should rely on their own enquiries.

INT: 240 m²
EXT: 45 m²



60 Woronora Crescent, Como